



New

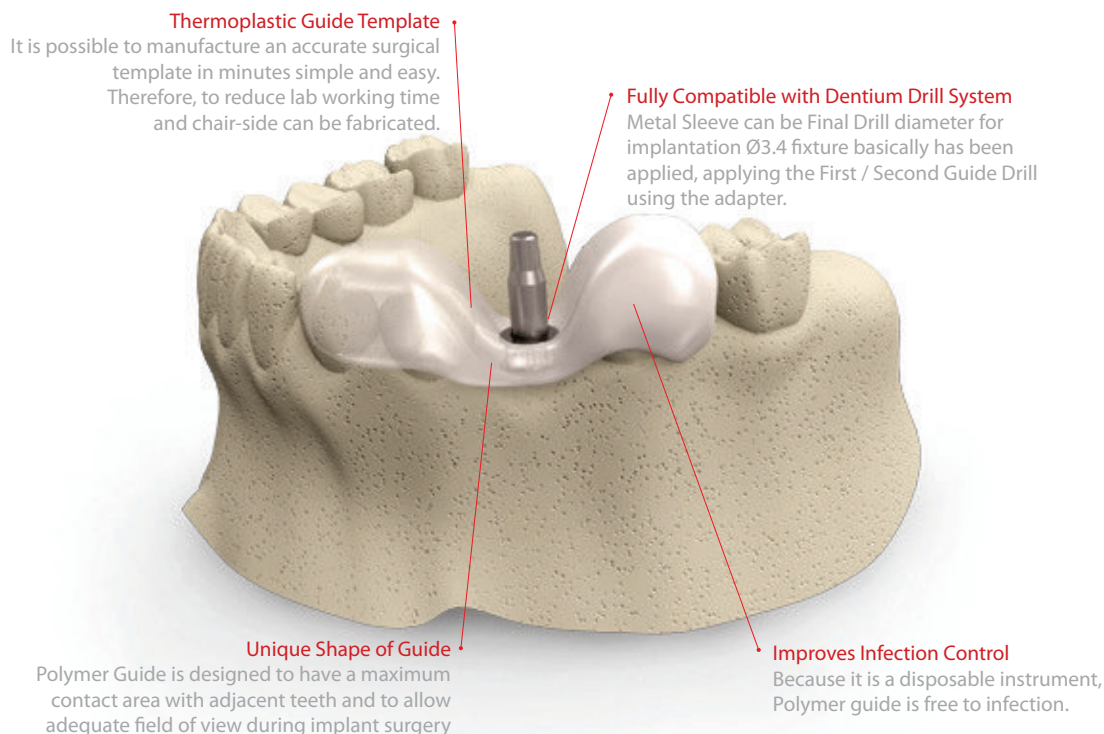
Dynamic Inspiration

Dentium Implant System

Our extensive clinical research has led to development of an innovative,
simple, and versatile dental implant system.

Polymer Guide

- Making precise surgical guide in minutes using hot water
- Disposable device improves infection control
- Titanium sleeve is compatible with guide drill and final drill



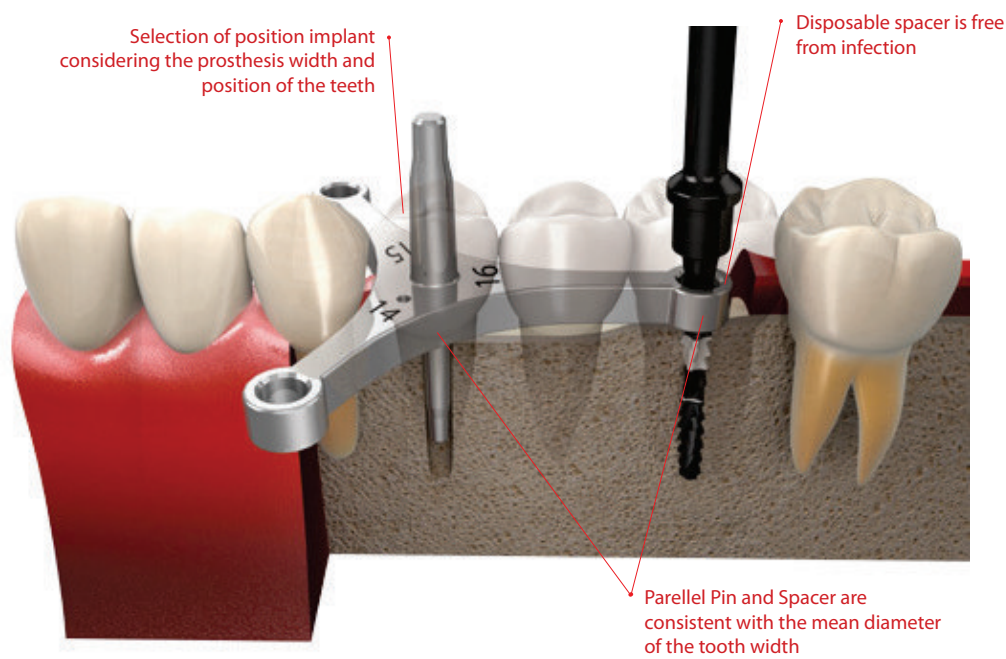
Clinical Case



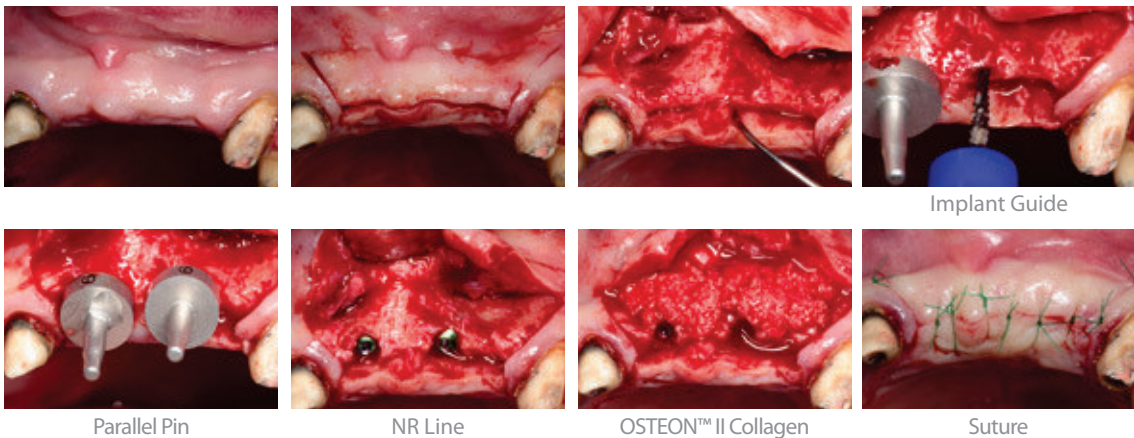
Implant Guide

Surgical guide to using silicon spacer and unique parallel pin

- Implant drill position guide which considers Mesiodistal width and position of the edentulous area
- Parallel Pin application and Spacer to match the mean diameter of the tooth width



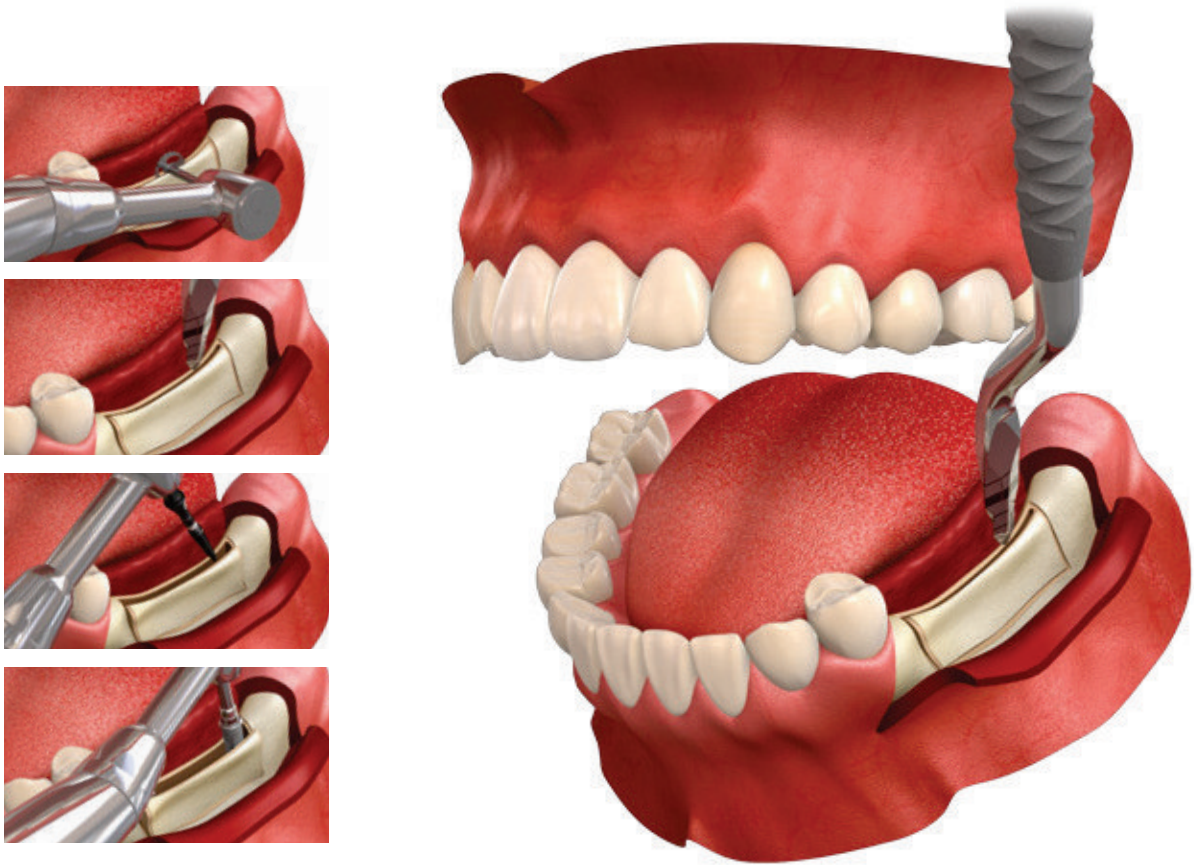
Clinical Case



Excellent Ridge Splitting

RS Kit (Ridge Spreader)

- Able to select the fixture implantation area spreading the bone with chisel
- Able to select fixture implant area without drilling
- Ridge spreader has 3 type, able to implant till Dentium fixture Ø4.5
- Convenient surgery from compatibility of hand-piece and ratchet
- Simple kit component



Mini Saw / Round Bur / Ridge Spreader / Bone Chisel

Clinical Case _01



Pre-op



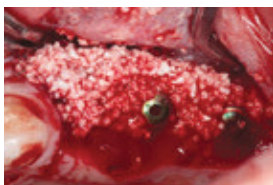
Bone Chisel



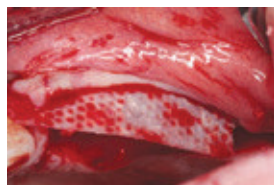
Implant Guide



NR Line



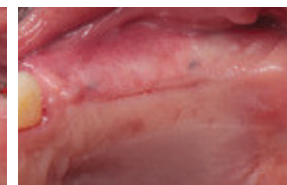
OSTEON™ II



Collagen Membrane



Suture



1 week healing

Clinical Case _02 Win Dental Clinic / Dr. Dong-Wook Chang



Pre-op



Expansion with Bone Chisel



Expansion with Ridge Spreader



Implantation



Application of graft material
OSTEON™ II & OSTEON™ II Collagen



Barrier membrane application
Collagen Membrane



3months healing



Final prosthesis

GBR System

- Provides GBR technique with better conveniences
- Multi-function membrane screw for membrane fixation or abutment/plate fixation

GBR Abutment

- Complete compatibility with the SuperLine fixtures
- Compatible with tightening tool : Screw abutment hex (3.2 hex)

GBR Plate

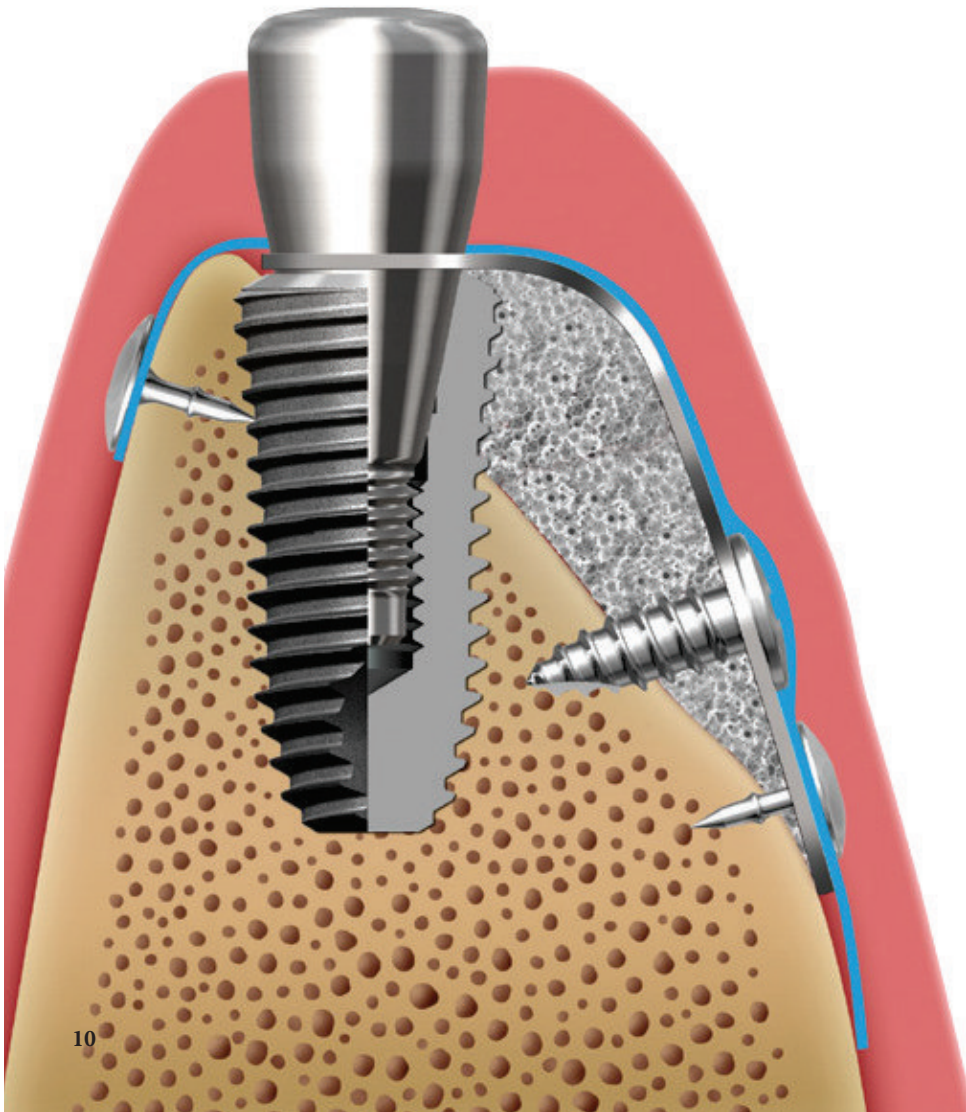
- Easy to Support membrane to make space for bone graft material
- Easy to bend or cut
- Layerable (up to 3 plates)

Membrane Screw

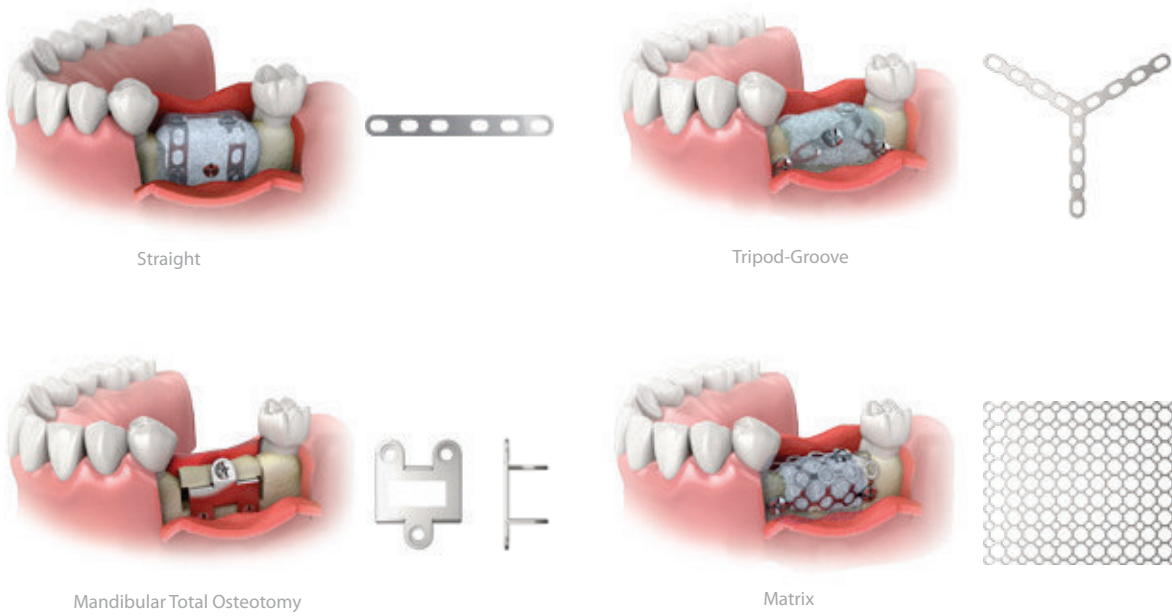
- Multi-function membrane screw for membrane fixation or abutment/plate fixation

Membrane Pin

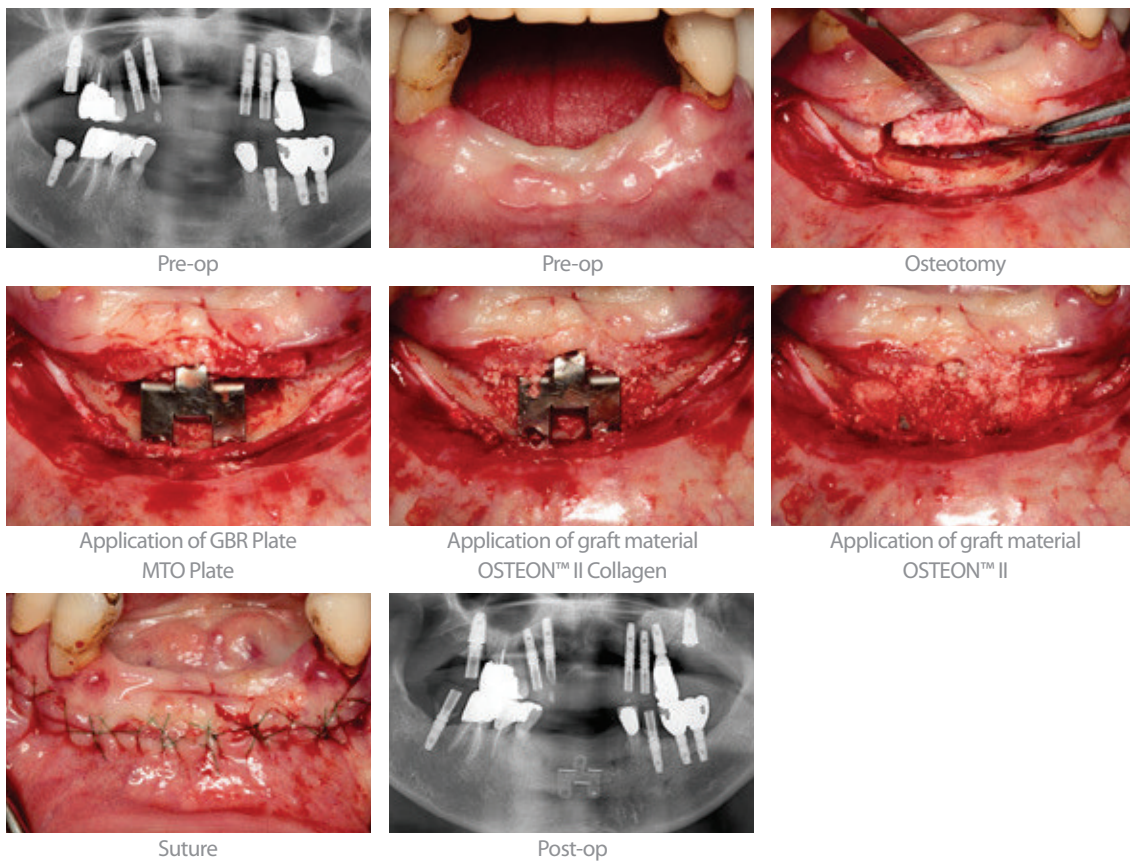
- Membrane pin for membrane fixation or plate fixation



GBR Plate



Clinical Case _MTO Plate



iCT injection^{SE}

The Different, Slim

- Wireless portable injection device
- Easy installation and removal of anesthetic agent cartridge
- Sterilizable anesthetic agent cartridge holder
- No pain function from 3-step of speed control
- Non-contact charge
- Voice information system
- Device condition display in text



Injection Speed (sec)	3-Step (250, 120, 50 / 1.8ml)
Dimension (WxDxH)	146 x 36 x 43 (mm)
Weight	72g
Speaker	0.3W output
Battery	3.7V, 470mAh Lithium polymer
Accessories	Cradle, Adapter, Anesthetic agent cartridge holder
Warranty	1 year



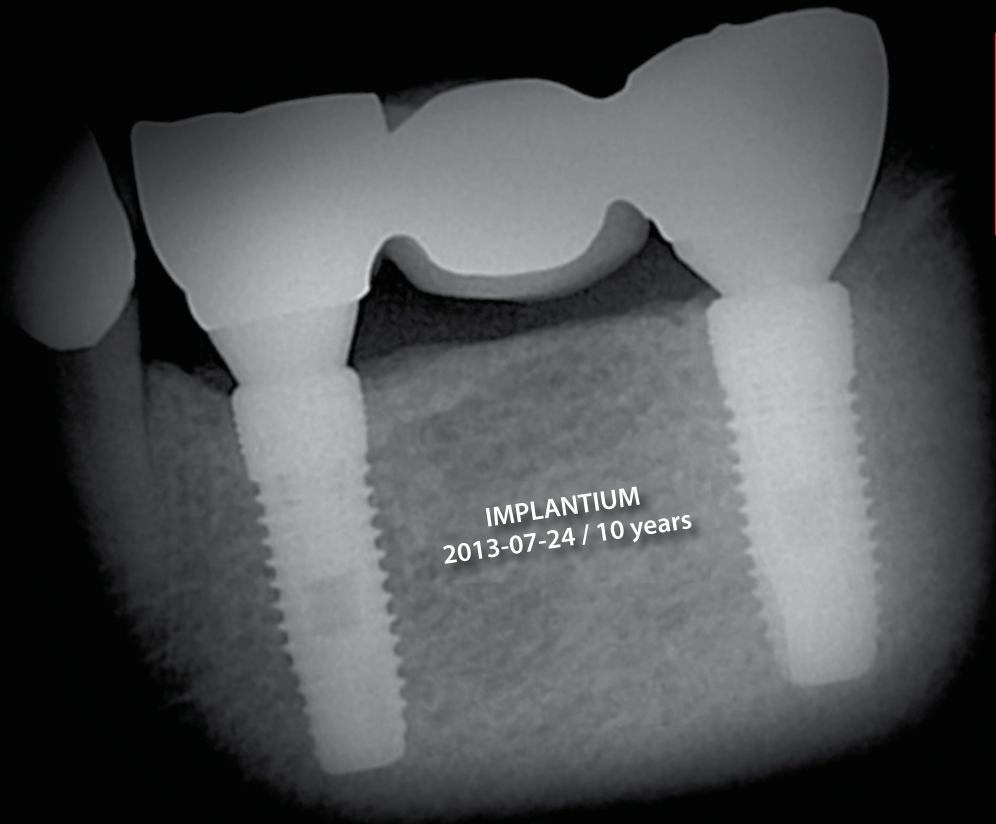
t-care [L]

Extra fine bristles for implant, orthodontic, prosthodontic patients

- Portable simple design
- Combined in one body of interdental brush
- 10,000 rpm sonic vibration is excellent to remove plaque and make healthier gum

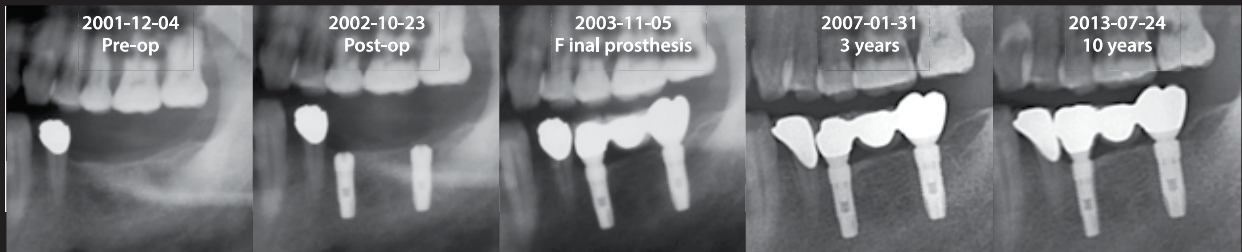


Vibration Mode	Sonic Vibration
Vibration Frequency	Approx. 10,000 rpm
Size (mm)	Ø18 x H147
Weight(g)	Approx. 30g
Battery	AAA(LR03), Alkaline, 1.5V
Accessory	Interdental brush



10여 년간 한결같은 마음으로 최고의 제품을 위해 노력하고 있습니다.

덴티움의 **신념**이 세상을 바꾸어 갑니다.



Internal connection type

The biological connection distributes the load to the fixture evenly.
Helps to minimize micro-movement and marginal bone loss.

SLA Surface

Higher bone-to-implant contact.
Faster bone formation on the surface.

Microthread

Optimal fixation threads reduce stress of marginal cortical bone and minimize marginal bone loss.
Initial stability & maximum sealing between the cortical bone and fixture.



Specifications are subject to change without prior notice.
Some products to be launched in the market after necessary approvals are also listed in this catalog.

Dentium
For Dentists By Dentists

HEAD OFFICE

3105 Trade Tower, 513 Yeongdong-daero, Gangnam-gu, Seoul, Korea 135-731 T +82-2-501-8560 F +82-2-567-9578

HOMEPAGE

www.dentium.co.kr

1309(Rev.3)